

1G421/201 SENSOR RANGE

The Sperosens 1G421 and 1G201 sensor range provides a cost-effective way to monitor toxic gases and methane. The unit accommodates larger sensor cells with longer life and higher concentration ranges. Typical gases are: CO, SO₂, NO₂ and CH₄.

The sensor range is by default certified to Ex ia I, which makes suitable for intrinsically safe applications in underground mines.

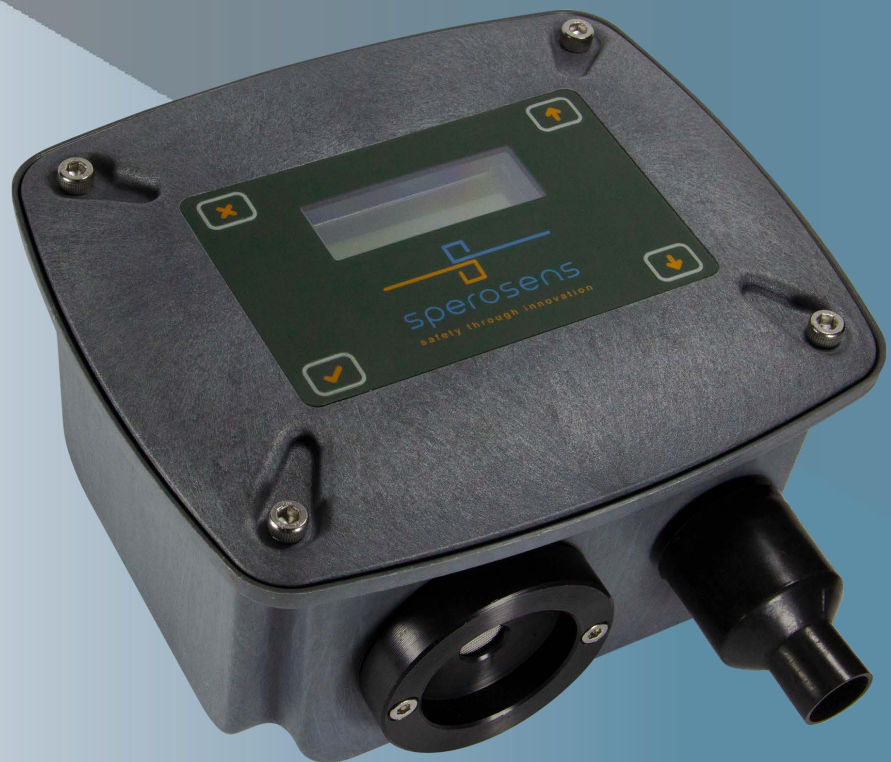
The monitored value is displayed on a large display, and the output is available as a 4-20mA or 0-1mA signal, depending on the model selected.

KEY FEATURES

- Field calibration via user menu
- Menu operated by single magnet
- Large display of values /parameters
- Digital sensor module interface
- Ex ia I Certified

APPLICATIONS

- Environmental monitoring
- Mine fire detection
- Gas monitor with local alarm



1G421/1G201 SENSOR RANGE

TYPICAL GASES MONITORED INTERNALLY

Gas options

- CO (carbon monoxide)
- NO₂ (nitrogen dioxide)
- SO₂ (sulphur dioxide)
- CH₄ (methane)

Other features:

Digital field calibration (Zero and Span) saved to non-volatile memory, output monitoring of 4-20mA or 0-1mA signals, two open drain outputs for local alarming, user selectable alarm modes, user selectable alarm trip levels

ELECTRICAL SPECIFICATIONS

Supply

- 18 – 30VDC
- Max. 60mA DC @ 24V supply

CERTIFICATION

Ex Protection: Ex ia I, to be used with suitably Ex rated power supply

MECHANICAL SPECIFICATIONS

Physical Dimensions of Unit

Main enclosure: 190L x 190W x 120H mm
(Incl. Mounting Bracket)

Material

Main enclosure: PC Bayblend

Installation method:

Supplied with stainless steel mounting brackets

ENVIRONMENTAL SPECIFICATIONS

Environmental Conditions

Water and Dust: IP 65 protection standard
(water and dust sealed)

Temperature

Operating: -10 °C to +50 °C

FOR MORE INFORMATION:

T +27 12 665 0317 · E info@spero.co.za
Sperosens · Sperosens · www.spero.co.za

Private Bag X115, Centurion, 0046, RSA

32 Park Avenue, Highway Business Park, Rooihuiskraal North, Centurion, 0154