

SPECIAL RISK TELEMETRY AND FIRE DETECTION SOLUTIONS

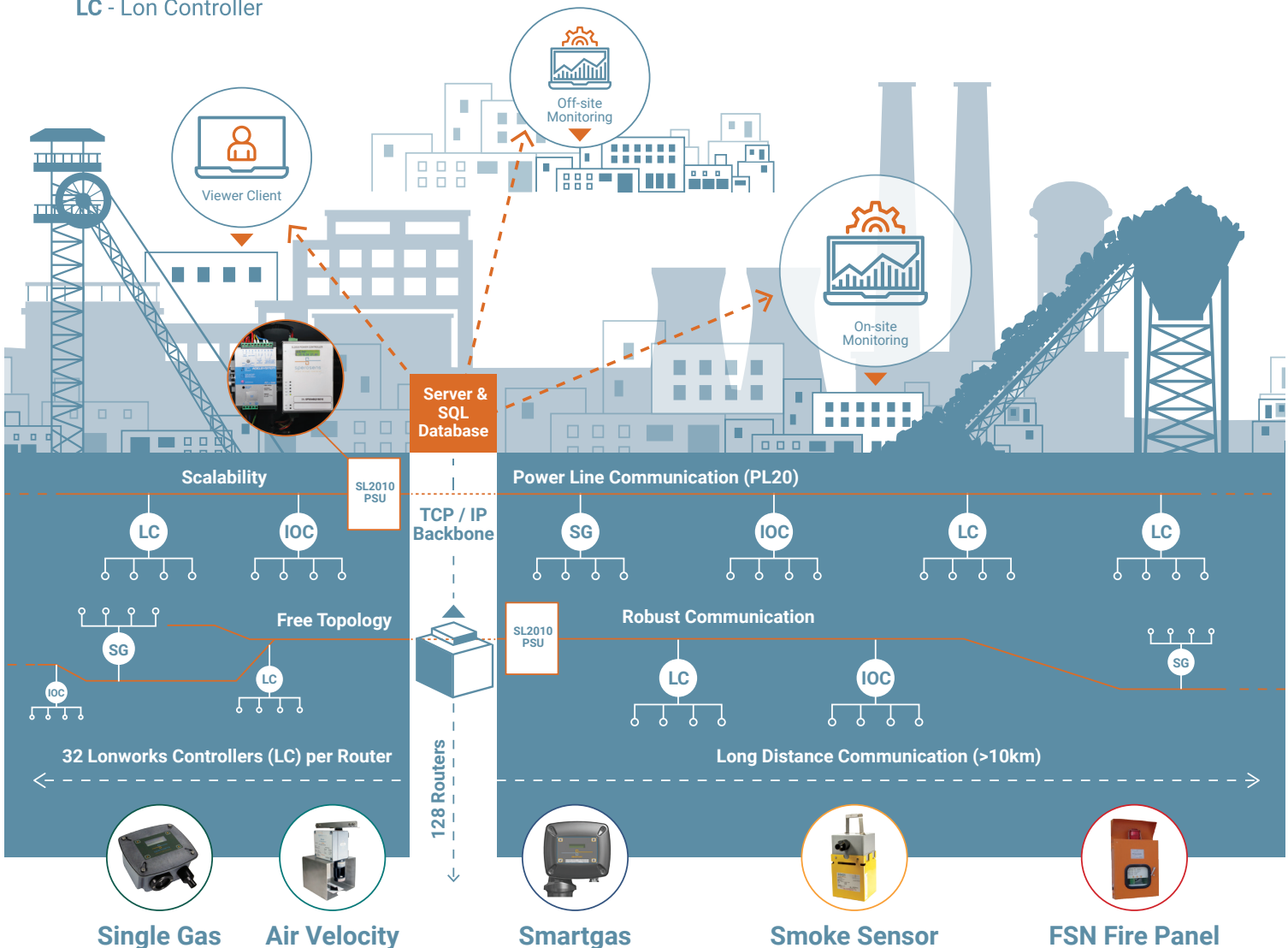
SL2010

Environmental Monitoring Telemetry System • Fire Detection

SG - Smart Gas

IOC - Input/Output Controller

LC - Lon Controller



The SL2010 Telemetry solution captures, stores and displays data and information is available by remote web access.

The SL2010 Telemetry System provides underground data communication in the mining industry and is mostly utilised as an underground Environmental Monitoring and Fire Detection Solution.

The network is based on LonWorks® technology and implemented as free topology. It is custom configurable and expandable based on specific mining layouts.

APPLICATIONS:

Environmental monitoring such as CO Gas, CH₄, O₂, H₂S, air flow, air temperature, humidity and smoke

Fire Detection

Status monitoring i.e. ventilation door open/close

Monitoring of dam levels and pump status

Substation monitoring for currents, voltage protection and relay status

Conveyor belt monitoring

Cognisant of blast times

Configuration of multiple alarm values

Mine graphical lay-out display

Customised fine tuning of system parameters

Visual information data display

Real-time watch dog monitoring adds precautionary actions

Fully compatible with Lonworks devices

Events linked to automated SOP's (Service Operating Procedure)

Early and Late blasting reports

Shaft Clearance for safe re-entry

CAPABILITIES AND BENEFITS:

Proprietary Fire Detection algorithm

Harsh terrain environmental monitoring

Free topology

Ultra-long distances achievable

Powerline communications

Toxic gas monitoring

Flammable gas monitoring

Ventilation monitoring

'Remote sensor configuration

Advanced trending and reporting

SMS Messenger:

SL2010 SMS notification system can transmit any new alarm or maintenance event via SMS to pre-set cellphone numbers

FOR MORE INFORMATION:

T +27 12 665 0317 • E info@spero.co.za

 Sperosens •  Sperosens • www.spero.co.za