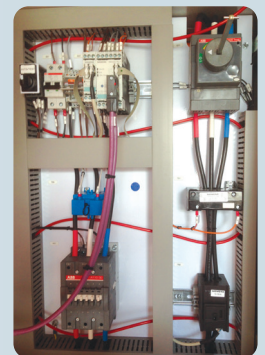
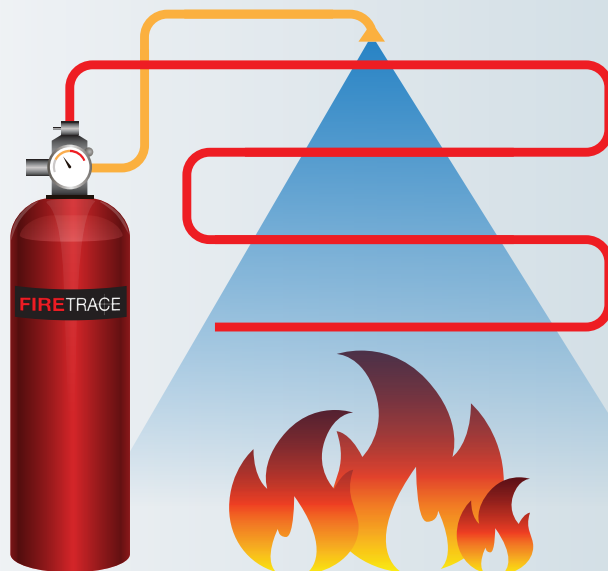


# FIRETRACE

## AUTOMATIC CLEAN GAS FIRE DETECTION AND SUPPRESSION

- Totally self-contained
- Fire detection and suppression system
- Stand-alone or automatic options
- Easy to install and maintain
- Ideal for harsh environments and confined spaces
- Approvals and listings from 20 international agencies



Sperosens recommends **FIRETRACE**, the fire suppression system using 'clean gas'. It is the most suitable extinguishing agent for critical and electronic equipment in various types of enclosures, providing cost-effective, stand-alone automatic fire suppression.

**FIRETRACE DETECTION TUBING** detects a fire through exact temperature sensitivity and immediately activates the suppression part of the system to extinguish the fire quickly and effectively.

**FIRETRACE** utilises the tube for both detection and suppression delivery. The FIRETRACE tube closest to the source of heat ruptures, thus forming an effective spray nozzle.

**THE FIRETRACE TUBE** is connected to the FIRETRACE cylinder that contains the best fire suppression agent for a specific hazard.

**FIRETRACE** is self-activating and reliably suppresses fires in seconds, and provides low maintenance, cost-effective fire detection and suppression all in one.

### ADVANTAGES INCLUDE:

- Listings and approvals from UL, ULC, FM, CE and more than 20 other international agencies.
- By using 'clean gas' as the suppression agent the system, FIRETRACE is non-toxic, non-corrosive and environmentally friendly.
- Can be used in populated areas of operation.
- Fully automatic, not requiring any external electrical source.
- Remains totally operational during unexpected power outages.
- FIRETRACE systems can be refilled, pressure tested on-site and returned to service within minutes
- Can be linked to existing fire monitoring systems - no control panel required
- Operates with commercially available agents including clean agents and foam
- Quick installation due to simplicity of design (saves time and labour)

- Eliminates false discharges due to accurate detection technology (limits down-time)
- Flexible detection tubing can be installed in harsh conditions, hard to reach and confined spaces
- Sized according to risk

### APPLICATIONS INCLUDE:

- Electrical control panels
- Data racks and server rooms
- Laboratory fume/exhaust cabinets
- UPS units
- Computer/data storage cabinets
- Transformer cabinets
- Flammable product storage cabinets

### FIRE EVENT MONITORING:

- All systems are fitted with a gauge and low-pressure switch providing a set of NO/NC dry contacts
- Can be connected to conventional fire monitoring equipment
- Compatible with SCADA systems
- Equipment shutdown possibility

### APPROVALS AND CERTIFICATIONS:

*Detailed information and certificates are available from the Sperosens office.*

- More than 20 international approvals and listings, including: UL, CE, FM, ULC & ISO9001. Approvals and listings vary by system type and agent
- FIRETRACE is approved to supply to the military and aviation sectors

## FOR MORE INFORMATION:

T +27 12 665 0317 • E [info@spero.co.za](mailto:info@spero.co.za)



Sperosens



Sperosens

[www.spero.co.za](http://www.spero.co.za)